

## Want to develop a culture of sensible Internet and email usage throughout your organization?

Internet and email are now essential business tools, but their misuse can cause a wide range of internal problems such as lost productivity, excessive download costs, and lawsuits resulting from illegal or inappropriate activities.

A well communicated Acceptable Usage Policy (AUP) is the first step towards addressing these issues, but without regular scheduled reporting and the ability to perform detailed investigations on incidents as they occur, these problems can often go un-noticed until a major incident occurs.

WebSpy's Analyzer software range offers comprehensive Internet and email reporting and analysis designed to help encourage productivity while providing a balance for the personal and social needs of employees. It also helps reduce the costs and the risks associated with providing Internet access and email resources to employees.

## Benefits

### Maximize Productivity

- ▶ Identify the top unproductive Internet sites & users.
- ▶ Discover who is sending or receiving excessive amounts of non-business emails.

### Minimise Costs

- ▶ Identify the sites, file types or users responsible for large non-business downloads.
- ▶ Discover the senders and recipients of large emails.

### Reduce Legal Liability

- ▶ Identify inappropriate activity early so you can take the appropriate action and protect the business from sexual harassment, defamation or illegal activity lawsuits.
- ▶ Prevent hostile work environments by minimizing exposure to inappropriate material.



## Key Features

### Import

Import text or SQL log data from a wide variety of 3rd party vendor products, such as proxy servers, firewalls, web and email servers. WebSpy Analyzer supports over 150 log file formats. For the full list, please visit:

<http://www.webspy.com/resources/logformats.aspx>

### Ad-hoc Investigation (Summaries)

Obtain a holistic view of your organization's activity and dynamically search for user or incident details using the intuitive Summaries screen and the versatile right-click drilldown feature.

### Reports

Choose from a comprehensive list of web and email reports or create your own custom report templates (Giga only). Reports can be generated in HTML, Microsoft® Word, CSV and Text formats. Distribute reports automatically, either by email or by coping to location such as an internal file server or intranet site.

### Aliases

Represent log data more meaningfully using aliases. For example, you can use aliases to group users into departments or to identify the programs being used to access the web. You can also easily import user and department information from Active Directory or NT User Groups.

### Profiles

Categorize web site URLs into profiles such as Adult, Sport, and Entertainment using customizable keyword profiling technology.

### Tasks

Schedule any action such as importing and reporting to occur at convenient times such as overnight or on weekends.

#### Minimum Requirements

- ▶ Microsoft® Windows™ 2000, XP, Server 2003 SP1, or Vista.
- ▶ 2 GHz CPU or faster
- ▶ 512 MB RAM

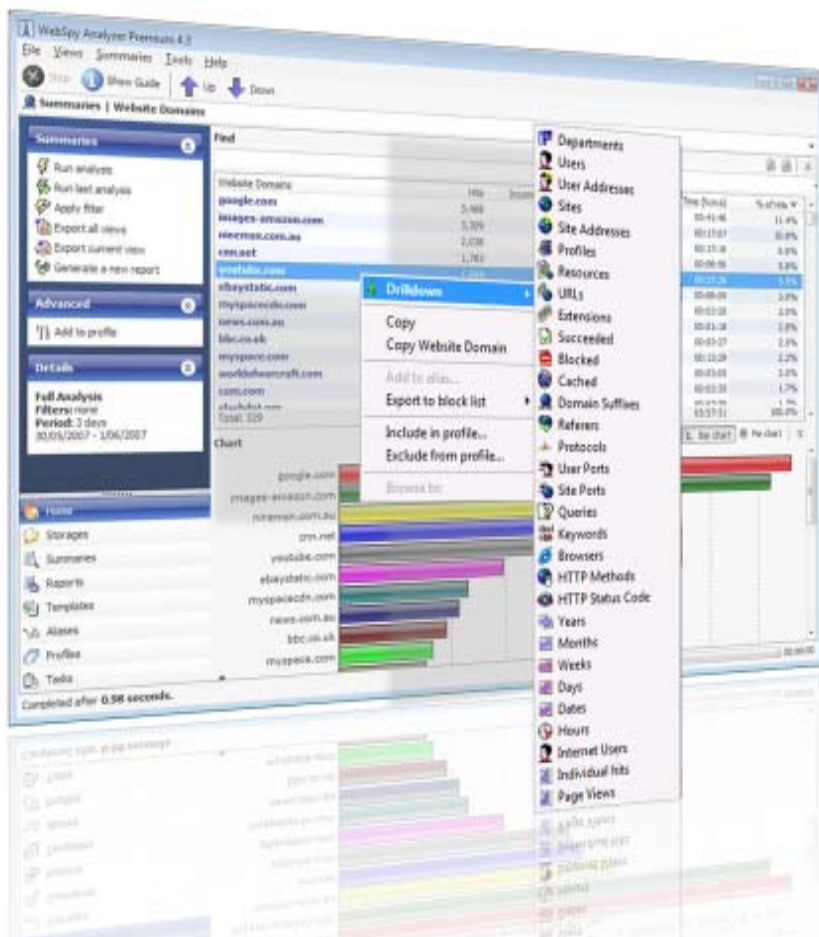
#### Recommended Requirements

- ▶ Microsoft® Word Viewer 2003 (free download) to run Microsoft® Word reports.
- ▶ Microsoft® Internet Explorer 5.5 or higher (to view Analyzer HTML reports)
- ▶ Microsoft® MDAC 2.7 or higher (to use SQL loader)
- ▶ An Internet connection capable of accessing XML web services (to receive automatic updates)

## The Analyzer Range

WebSpy's Analyzer range comes in three flavours: Standard, Premium or Giga. Use the feature comparison below to find the right Analyzer for you.

Feature	Standard	Premium	Giga
<b>Analysis and Reporting Scope</b>	Web usage analysis and reporting	Web and email usage analysis and reporting	Web and email usage analysis and reporting
<b>Import Capacity</b>	Import up to 2 GB of uncompressed log files	Import up to 4 GB of uncompressed log files	Import an unlimited amount of log data
<b>Import Methods</b>	<ul style="list-style-type: none"> <li>▶ Uncompressed text log files</li> <li>▶ SQL Database</li> </ul>	<ul style="list-style-type: none"> <li>▶ Uncompressed text log files</li> <li>▶ Compressed text log files (zip, gzip)</li> <li>▶ SQL Database</li> <li>▶ Text logs from FTP locations</li> </ul>	<ul style="list-style-type: none"> <li>▶ Uncompressed text log files</li> <li>▶ Compressed text log files (zip, gzip)</li> <li>▶ SQL Database</li> <li>▶ Text logs from FTP locations</li> </ul>
<b>Alias Configuration Options</b>	Edit a standard set of Aliases to represent certain log data more meaningfully	Edit a standard set of Aliases to represent certain log data more meaningfully	Create your own tailored Aliases to represent any log data more meaningfully
<b>Report Customisation</b>	Limited customization of a comprehensive set of Web report templates.	Limited customization a comprehensive set of Web and email report templates	Complete customization of any Web and Email report template, as well as the ability to create new reports templates.



DOWNLOAD YOUR FREE FULLY FUNCTIONAL 30 DAY TRIAL AT [www.webspy.com](http://www.webspy.com)



**Microsoft**  
GOLD CERTIFIED  
Partner