



Insight for Microsoft SBS Premium

Features:

Analyze Internet Usage

Analyze the information from Microsoft ISA Proxy and interactively drilldown into all areas of Internet usage. Investigate who is downloading the most, browsing the longest, or wasting their time on the web.

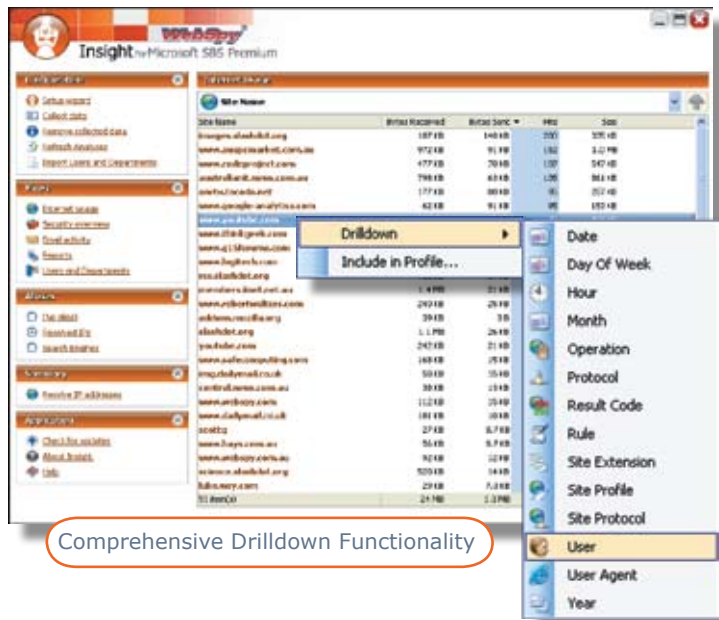
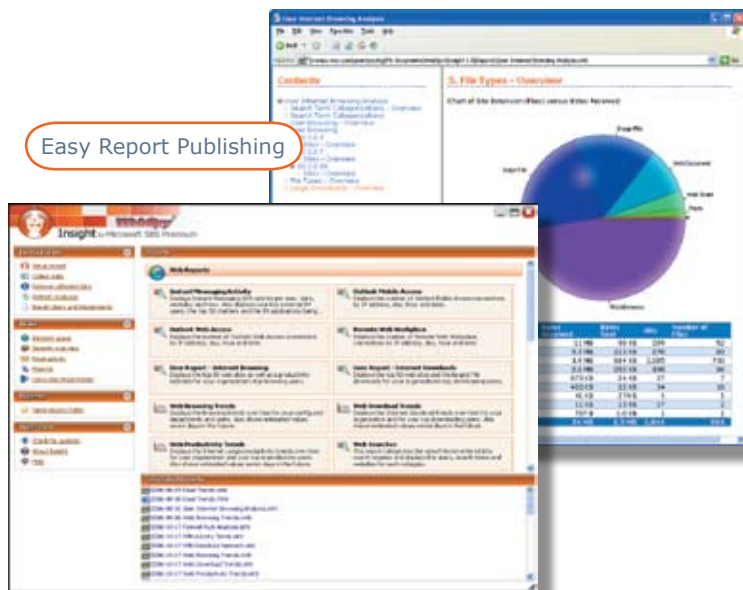
Analyze Security Information

Analyze the information from Microsoft ISA Firewall and interactively drilldown into all areas of firewall activity. Analyze the firewall rules and validate they are working as expected.

Analyze Email Activity

Analyze your Microsoft Exchange tracking logs and interactively drilldown into all areas of email activity. Identify who is sending and receiving large or inappropriate emails.

Easy Report Publishing



Comprehensive Drilldown Functionality

Categorise Web and Email Activity

Insight for Microsoft SBS Premium automatically categorizes Web and Email traffic into 'Profiles' such as Adult, Sport, Web Mail and so on.

Import Department Information from your Network

Insight for Microsoft SBS Premium can automatically 'learn' your organisational structure by importing this information from Active Directory or from Microsoft ISA User Sets. This enables you to easily investigate each of your departments.

Publish Reports

Publish a wide range of Web, Security and Email reports to Web documents, Word Documents, Text files or CSV. These reports can then be distributed around your organization and archived.

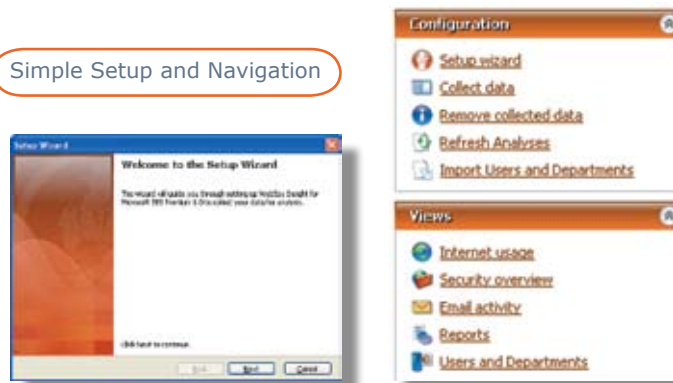
Aliases

You don't need to be technical to understand the information supplied by Insight for Microsoft SBS Premium. Use the built in aliases to convert raw log file information into more meaningful names. For example, Status Codes and Event IDs can be aliased into names such as 'Page not found' and 'Message redirected'.

Simple User Interface

Insight for Microsoft SBS Premium is an easy to use application. The clean user interface removes all the unnecessary complexity usually found in network reporting tools.

Simple Setup and Navigation



Minimum Requirements

- Microsoft 2000, XP, & 2003 Server
- Microsoft .NET Framework 2.0
- Microsoft Small Business Server 2003 SP1 or R2, Premium Edition
- Pentium P4-1 GHz or faster
- 512 MB RAM
- Microsoft ISA Management Tools - Installed on SBS server and also the machine running Insight



Insight for Microsoft SBS Premium



About WebSpy

WebSpy produces a range of software applications specifically designed to provide comprehensive, easy to read information on how staff are using the Internet and email. WebSpy's powerful analysis and reporting enables managers and business owners to make informed decisions on the use of their network resources.

Insight for Microsoft SBS Premium

WebSpy Insight for Microsoft SBS Premium is designed exclusively to work with and complement **Microsoft Windows Small Business Server Premium Edition** to help organizations ensure responsible and productive use of their networks.

Issues of Providing Internet Resources

In today's complex and highly vulnerable technology environments, it is imperative that organizations protect their assets, productivity, reputation and exposure to litigation by managing the way employees use the Internet and email.

Reduced productivity through recreational Internet surfing is costing organizations millions of dollars each day. Small businesses cannot afford to support this as well as run the risk that someone somewhere is downloading inappropriate material that could have wide reaching impacts.

Technology has also made it easy for the goodwill or intellectual property that you have built within your organizational boundaries.

Rules and policies are an essential part of controlling these issues, but unless you can measure and report on actual activity you will never really know what is happening within your organization.



Protecting Your Business

Insight for Microsoft SBS Premium can help you apply a disciplined approach to managing these issues. The key business benefits are numerous and include:

- Boosting employee productivity by encouraging sensible usage of Internet and email resources.
- Managing and controlling your Internet costs associated with bandwidth usage.
- Reducing potential internal security threats.
- Limiting potential legal liabilities.

The screenshots show the following components of the software interface:

- Site Name Report:** A table listing various websites with columns for Site Name, Bytes Received, Bytes Sent, MBs, and Size.

Site Name	Bytes Received	Bytes Sent	MBs	Size
www.google.co.uk	187,425	143,675	336	335 KB
www.msn.com	972,428	761,428	232	3.0 MB
www.yahoo.com	477,428	79,428	127	947 KB
www.mcafee.com	790,428	430,428	376	361 KB
www.mcafee.com	277,428	89,428	76	257 KB
- Drilldown Menu:** A context menu with options: Drilldown, Include in Profile, Date, Day of Week, Hour, Month, Operation, Protocol, Result Code, Rule, Site Extension, Site Profile, Site Protocol, User, User Agent, and Year.
- File Types Overview:** A pie chart showing the distribution of file types.
- Site Behavior Overview:** A bar chart showing activity over time.
- Site Behavior (Pie) - Detail Report:** A table showing detailed site behavior data.

For more information, visit www.webspy.com or contact nearest sales office.

Europe t: +44 (0) 207 239 7500 f: +44 (0) 207 239 7539 e: europesales@webspy.com	North America t: +1 206 575 7763 f: +1 206 575 7809 e: sales@webspy.com	Asia Pacific t: +61 (0)8 9321 3322 f: +61 (0)8 9321 3377 e: sales@webspy.com.au
--	---	--